

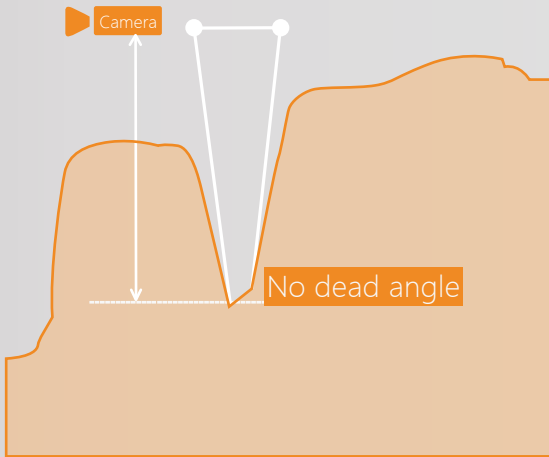
Up360+



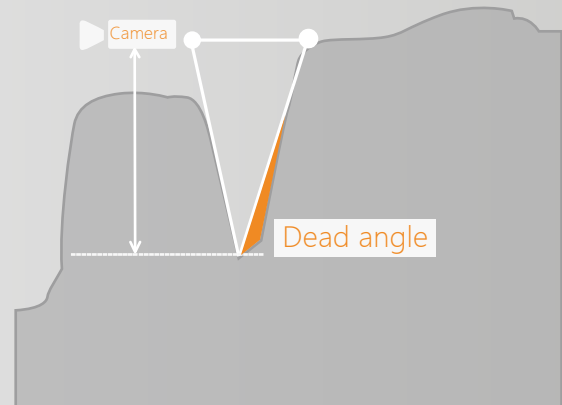
**The world's first
specialized uncut-model scanner**

01 Scan without dead angle

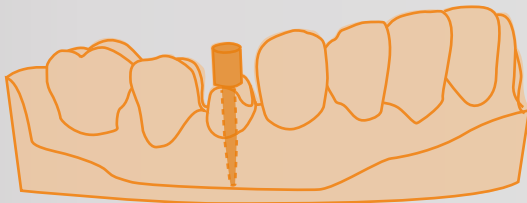
Scan impression/uncut models; data without dead angle; No need fill holes.



UP360+ scanner structure



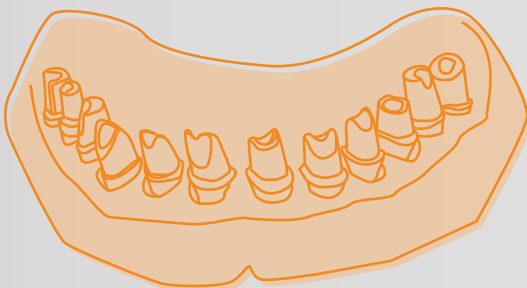
Traditional scanner structure



02

All-round solution for post&core scanning

No need to make post&core wax, just need the scan body of post&core



03

Scan full arch implants in one time

no need to loose and fasten the abutments screws

04

True color scanning

Perfectly restore texture colors



05

New way of occlusion scan

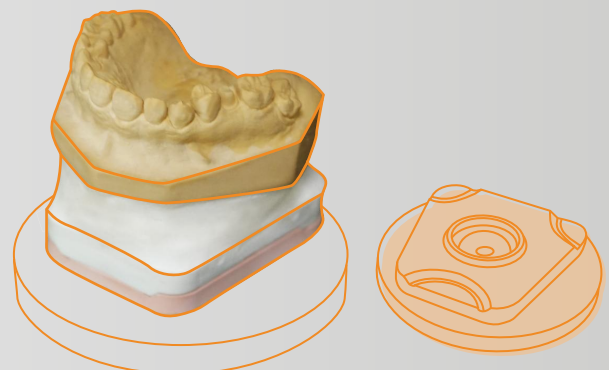
Fast and simple

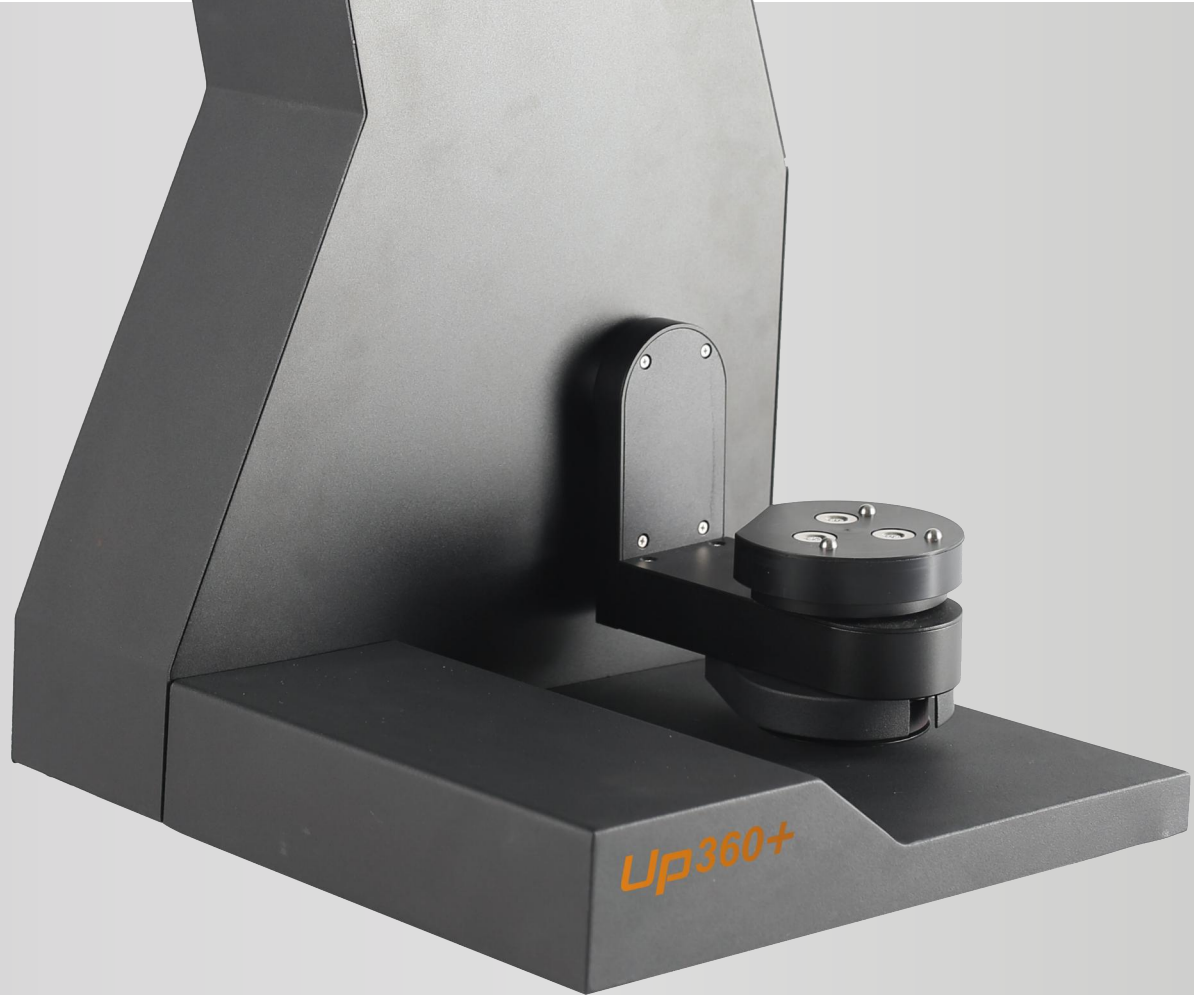


06

Articulator free for scanning big articulator

Get occlusion Easily without scanning articulator





| | |
|-----------------|--|
| Model | UP360+ |
| Size | 305*310*550 (mm) |
| Weight | 10kg |
| Scanning range | 100*100*75 (mm) |
| Scanning method | Non-contact blue light scan |
| Camera | 2*2.0 (MP) High frame rate |
| Projector | Customized Blue-light, support multi-color scanning |
| Interface | USB 3.0 |
| Power supply | 110V-240V, 50HZ |
| Speed | Full arch 20s, 12 unit dies 26s |
| Precision | 6 microns |
| Output format | STL; PLY; OBJ |
| Automation | Automatic calibration, Intelligent hole filling |
| Adaptation | Plaster, Impression, Wax bite , Scan body, True color texture, Orthodontic, Multi-dies, Big articulator |